

# NEURAL TISSUE DAMAGE MARKERS

## Immunoassays



## HUMAN PROSTAGLANDIN D SYNTHASE (LIPOCALIN-TYPE) ELISA

*Cat. No.: RD191113100R*

**RUO**

### Intended use

The RD191113100R Human Prostaglandin D Synthase (Lipocalin-type) ELISA is a sandwich enzyme immunoassay for the quantitative measurement of human prostaglandin D synthase (L-PGDS, beta-trace protein, BTP).

- For research use only
- The total assay time is less than 3 hours
- The kit measures prostaglandin D synthase in serum, plasma (EDTA, citrate, heparin), urine and cerebrospinal fluid (CSF)
- Assay format is 96 wells
- Quality Controls are human serum based
- Standard is recombinant protein based
- Components of the kit are provided ready to use, concentrated or lyophilized

### Clinical application

- Renal disease
- Heart disease
- Neurological disease

# Immunoassays

## Test principle

In the BioVendor Human Prostaglandin D Synthase (Lipocalin-type) ELISA, standards, quality controls and samples are incubated in microtitre plate wells pre-coated with polyclonal antihuman L-PGDS antibody. After 60 minutes incubation and washing, polyclonal antihuman LPGDS antibody, conjugated with horseradish peroxidase (HRP) is added to the wells and incubated with captured L-PGDS for 60 minutes. Following another washing step, the remaining HRP

conjugate is allowed to react with the substrate solution (TMB). The reaction is stopped by addition of acidic solution and absorbance of the resulting yellow product is measured. The absorbance is proportional to the concentration of L-PGDS. A standard curve is constructed by plotting absorbance values against concentrations of L-PGDS standards, and concentrations of unknown samples are determined using this standard curve.

## HUMAN PROSTAGLANDIN D SYNTHASE (LIPOCALIN-TYPE) ELISA CAT. NO.: RD191113100R

Assay format Sandwich ELISA, HRP-labelled antibody, 96 wells/kit

Samples Cerebrospinal fluid, Plasma, Serum, Urine

Controls QC-Low, QC-High

Standards 1 to 40 ng/ml

Limit of detection Limit of Detection (LOD) (defined as concentration of analyte giving absorbance higher than mean absorbance of blank\* plus three standard deviations of the absorbance of blank:  $A_{\text{blank}} + 3 \times \text{SD}_{\text{blank}}$ ) is calculated from the real prostaglandin D synthase values in wells and is 0.5 ng/ml.

\*Dilution Buffer is pipetted into blank wells.

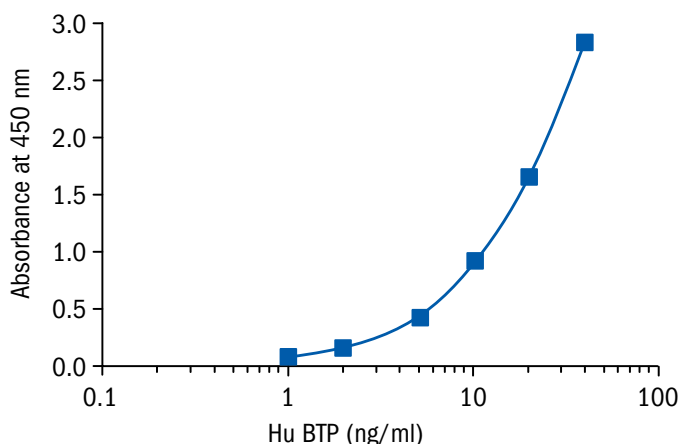
Cross-reactivity Monkey

## Summary of protocol

- Reconstitute QCs and Master Standard and prepare set of Standards
- Dilute samples and QCs 100×
- Add 100 µl Standards, QCs and samples
- Incubate at RT for 1 hour/300 rpm
- Wash plate 3 times
- Add 100 µl Conjugate Solution
- Incubate at RT for 1 hour/300 rpm
- Wash plate 3 times
- Add 100 µl Substrate Solution
- Incubate at RT for 10 min
- Add 100 µl Stop Solution
- Read absorbance and calculate results

## Related products

- Prostaglandin D Synthase Human E. coli His RD172113100
- Prostaglandin-D Synthase (Lipocalin-Type) Human, Rabbit Polyclonal Antibody RD181113100
- Prostaglandin-D Synthase (Lipocalin-Type) Human, Sheep Polyclonal Antibody RD184113100



Date of issue September 2013



**BioVendor – Laboratorní medicína a.s.**

Karasek 1767/1, 621 00 Brno, Czech Republic

Phone: +420 549 124 185, Fax: +420 549 211 460

E-mail: info@biovendor.com

› [www.biovendor.com](http://www.biovendor.com)

› Visit [www.biovendor.com](http://www.biovendor.com) to find more information about BioVendor products.